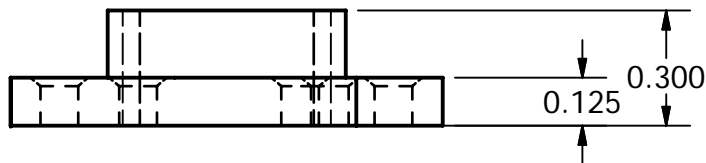
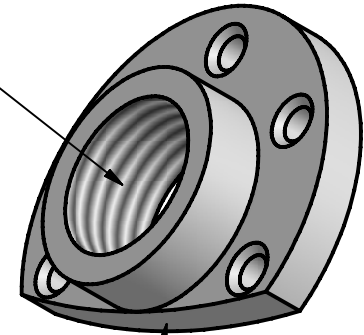
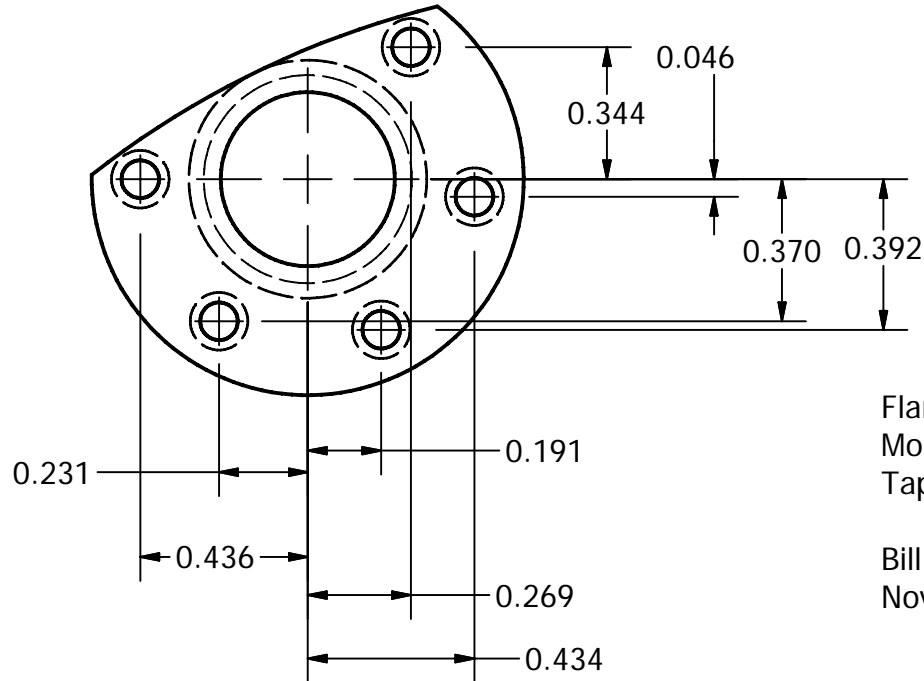


1/4" NPT
Tap from outside the tank
after flange is mounted.



This is removed to allow the sensor
to be located near the bottom edge
of the inspection cover



Flange for GEM ELS-1100HT Level Sensor
Mount Inside of Tank with Sealant.
Tap Center Hole from **Outside** of Tank **After** Mounting.

Bill Dube'
Nov 2 2005