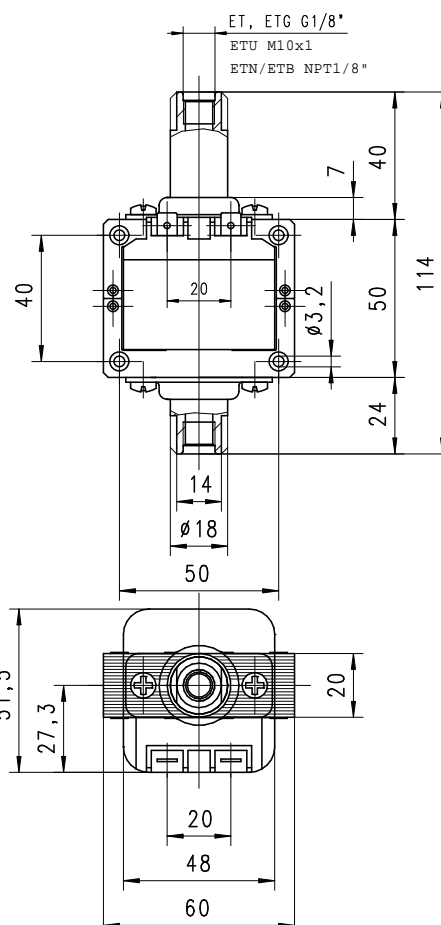


# Electromagnetic Pump

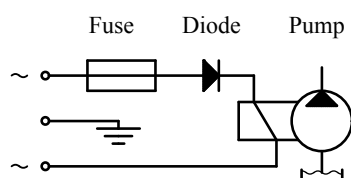
**ET, ETG,  
ETU, ETB,  
ETN  
150**

## Technical data

Maximum pressure	15 bar
Maximum flow rate	25 l/h
Maximum suction height	1 m
Viscosity range	1...600 mm <sup>2</sup> /s
Filter	Mesh 100 µm
Tension	230V~ (110V, 24V,12V)
Frequency	50 Hz, (60 Hz)
Electrical connection	6.35x0.8 (NF.EN 61210)
Power	45 W
Operating factor	100% ED / 20°C
Weight	620 g
Temperature	1°...50°C



## Fuse and diode are necessary

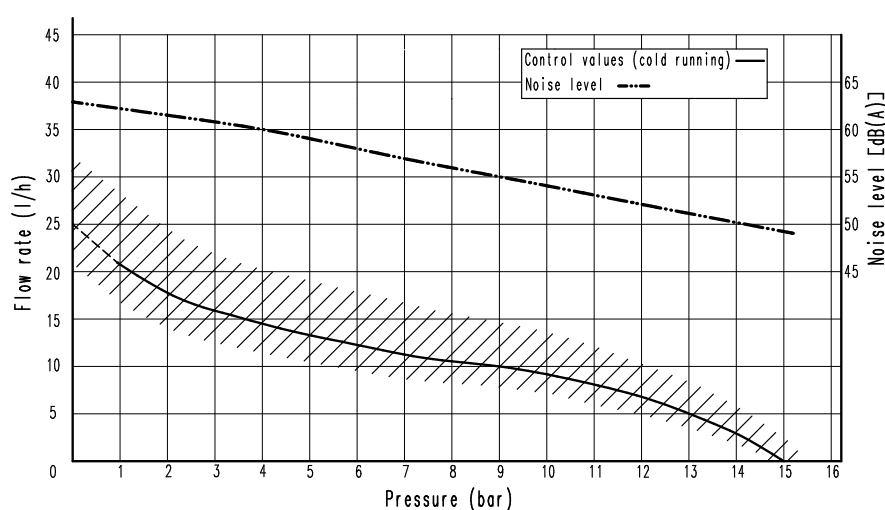


The given specifications have been measured under those conditions :

- stabilised electrical alimentation at 230V
- water at 20°C
- suction height : 1 meter
- without drop in
- cold pump

The noise level has been measured at 1 meter.

**Gotec** is pleased to answer to any question that arises or to come up to any of your special application.



**Gotec** RESERVES THE RIGHT TO MODIFY ITS PRODUCTS AT ANY TIME AND WITHOUT NOTICE.

**GOTEC SA**

NOVAMAX INDUSTRIAL INTL LLC - 8200 S Quebec St Suite A-3 Englewood, CO 80112  
(303) 470-7226 Fax (303) 470-5773 Toll-Free 1-800-594-3380 [www.novamaxindustrial.com](http://www.novamaxindustrial.com)