

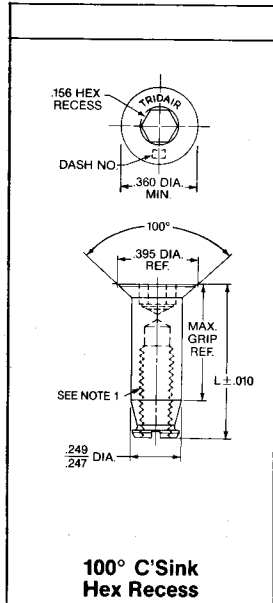
Live Lock CA1800/CA18000 Series.

6

Thread Size: .1640-32, 4 Lead

Notes:

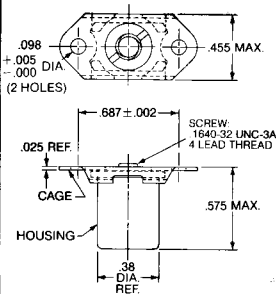
1. Thread size: .1640-32 UNC-3B, modified minor diameter, 4 lead thread.
2. Recommended tightening torque: 30 inch pounds.
3. Part numbers shown are basic part numbers only. See Ordering Information on page 19 for required dash number, weight information and "L" dimension.



Material	Part No.
Material: 300 Series CRES Finish: Passivated per QQ-P-35	CA1820-()
Material: 300 Series CRES Finish: Black Oxide per MIL-C-13924	CA1820-()B
Material: 300 Series CRES Finish: Cadmium Plated per QQ-P-416, Type II, Class 2	CA1820-()C
Material: Alloy Steel Heat Treat: Per MIL-H-6875 Finish: Cadmium Plated per QQ-P-416, Type II, Class 2	—
Material: A-286 CRES Heat Treat: Per MIL-H-6875 Finish: Passivated per QQ-P-35	CA18187T-()

Live Lock CA1800/CA18000 Series.

Receptacles.



Weight:
0.014 lbs./ea. approx.

**2-Lug
.025 Radial Float**

Material	Part No.
Housing: Aluminum Alloy per QQ-A-225 Screw: Alloy Steel Cage: 17-7PH CRES Heat Treat: Screw: Per MIL-H-6875 Cage: Per MIL-H-6875 Finish: Housing: Blue Anodized per MIL-A-8625 Screw: Cadmium Plated per QQ-P-416, Type II, Class 2 Cage: Passivated per QQ-P-35	—
Same as Part No. CA18157 Except Cage is Cadmium Plated per QQ-P-416, Type II, Class 2	—
Housing: 300 Series CRES Screw: A286 CRES Heat Treat: Screw: Per MIL-H-6875 Finish: Housing: Passivated per QQ-P-35 Screw: Dry Film Lubed	—
Housing & Cage: 300 Series CRES Screw: A286 CRES Heat Treat: Screw: Per MIL-H-6875 Finish: Housing & Cage: Passivated per QQ-P-35 Screw: Dry Film Lubed	CA1810
Same as Part No. CA1810 Except Cage is	