

# THE GREAT FASTGLASS SUFFOLK 100 RACE

## RACE COURSE / RULES

The Suffolk 100 is NOT sanctioned or sponsored by any company or individual, and its sole purpose is for a group of pilots to fly over a predetermined course. The following instructions are not meant to supersede any FAA regulations and it is the responsibility of each pilot participant to operate his/her aircraft in a SAFE and LEGAL manner.

**Race Course:** **KSFQ - KEDE - CVI - KSFQ**

### **Check Point Coordinates:**

**KSFQ:** N 36° 40' 56.5 W 76° 36' 06.7" Magnetic Variation: 10.6°W Elevation: 72'

**KEDE:** N 36° 01' 39.8 W 76° 34' 01.5" Magnetic Variation: 10.4°W Elevation: 20'

**CVI :** N 36° 22' 22.5 W 76° 52' 17.6" Station Declination: 9.0°W Elevation: 70'

**Finish Line** - Approach End of Rwy 15: (NOTE Rwy 15-33 Closed)

N 36° 41' 26.0"W 76° 36' 45.0"

Note: Above coordinates were obtained from the FliteStar 8.5 Database. It is the pilot's responsibility to verify the accuracy of these coordinates.

### **Frequencies:**

Race Frequency : **122.35** (122.75 backup only)

KSFQ Unicom/CTAF: **122.70**

AWOS : 119.375

KEDE Unicom/CTAF: 123.00

AWOS : 121.125

CVI VOR : 114.60

**Course Length: 92.5 NM** (5 NM added for turns, GPS mileage = 87.5 NM)

### **General Rules:**

- Pilot Briefing at 10:00 AM (main terminal building)
- Aircraft staging right after briefing.
- First aircraft to takeoff at approximately 11:00 AM
- Race will be from a semi-STANDING start and a **FLYING finish**.
- **CLOSED Runway 15-33 will be both the START and FINISH line.**
- Aircraft departure sequence will be assigned by the race officials PRIOR to the race. Generally, the faster planes will depart first.
- Race participants will be given a race sequence number CARD. Please display this card on the PILOT side (left side) of your canopy to assist the race officials in sequencing for the race.
- **Timing begins as aircraft CROSSES runway 15-33.**
- Timing ends as aircraft crosses the finish line(runway 15-33) on an overhead pass.
- Aircraft will depart approximately **20 seconds** apart, *local traffic permitting*.
- **Always stay at least 500 ft above all TPA's.**
- Comply with all FARs
- The race number will be the last 2 characters of your N-number.
- See **Checkpoint turn procedures** on page 4.
- Announce your position & race number at every turn at 122.35 (*i.e Race Zulu-Romeo, Turn ONE*)
- Race officials will monitor 122.35 to anticipate race aircraft positions and arrivals

## ***RACE PROCEDURE:***

### ***1. Staging / Take-Off:***

Immediately after the briefing, the race officials will begin queuing the race planes at the assigned staging area (location to be announced at the briefing). Once all planes are in position, you will be instructed to start your engines and begin to taxi towards the active runway.

When you ready for takeoff, taxi to active runway and, at your discretion, begin your take-off roll.

**NOTE:** *Pilot is responsible for making CTAF position reports (i.e. Lancair ZR, departing Runway xx, South bound).*

### ***2. Departure:***

Climb to 300 ft AGL (approx. 375 ft MSL) at Runway Heading,

Fly at Runway Heading until **END OF THE RUNWAY** (do not turn prior to end of runway).

TURN TO COURSE.

*Switch to frequency 122.35 (122.75 backup) when clear of KSFQ traffic pattern.*

Proceed on course towards the KEDE (Airport Elevation = 20'). Maintain safe and legal altitudes during the entire course.

*Announce your position & race number after every turn at 122.35.*

### ***3. En Route:***

From the KEDE, proceed towards the CVI VOR.

*Announce your position & race number after every turn at 122.35.*

### ***4. Arrival:***

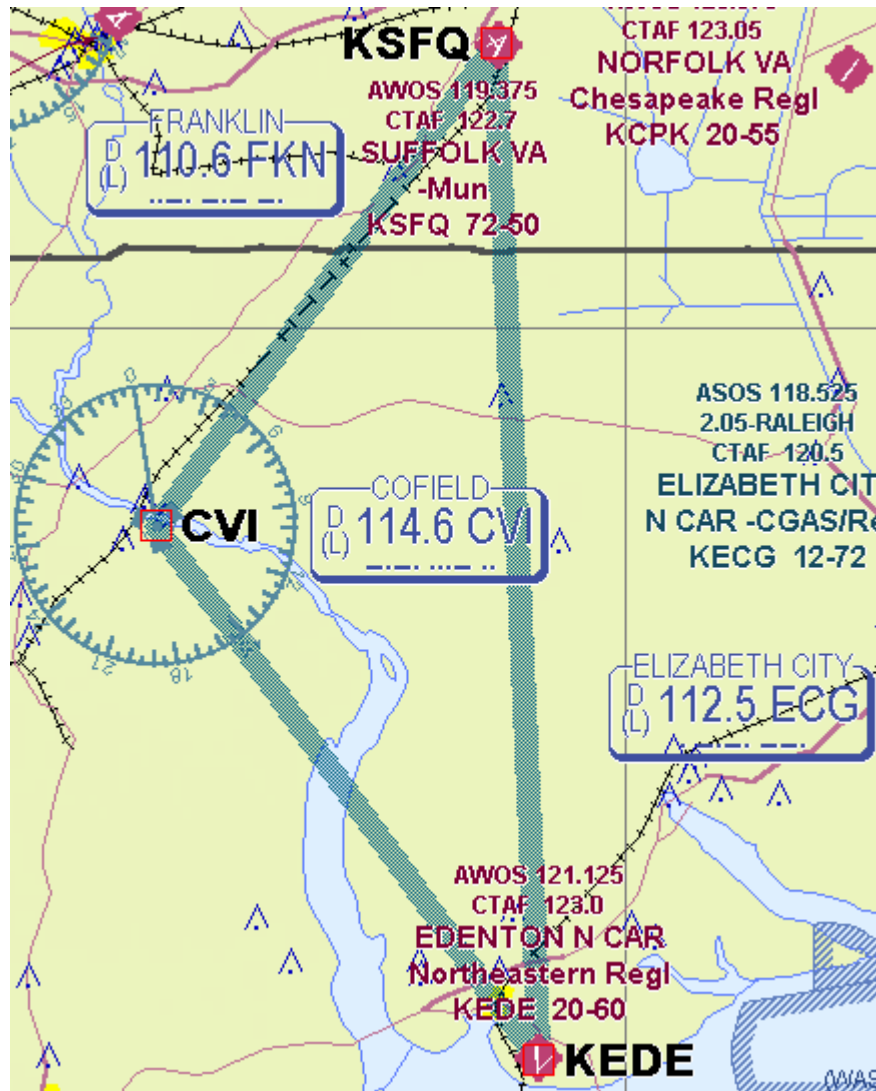
**IMPORTANT:** Broadcast your race number on **122.35 at ten (10) and at five (5) miles out from Suffolk Airport** on the inbound leg to alert the race officials of your pending arrival and help them spot you as you cross the finish line.

Cross the ARRIVAL END of Runway 15 Finish Line (see illustration below) at **no less than 1,600 ft MSL**. **MOST IMPORTANT:** Make your last radio call for the race as you cross the finish line (*i.e. Race Zulu-Romeo, FINISH*)

Timing ends as aircraft crosses the finish line.

Switch over to **KSFQ unicom (122.70) to land.**

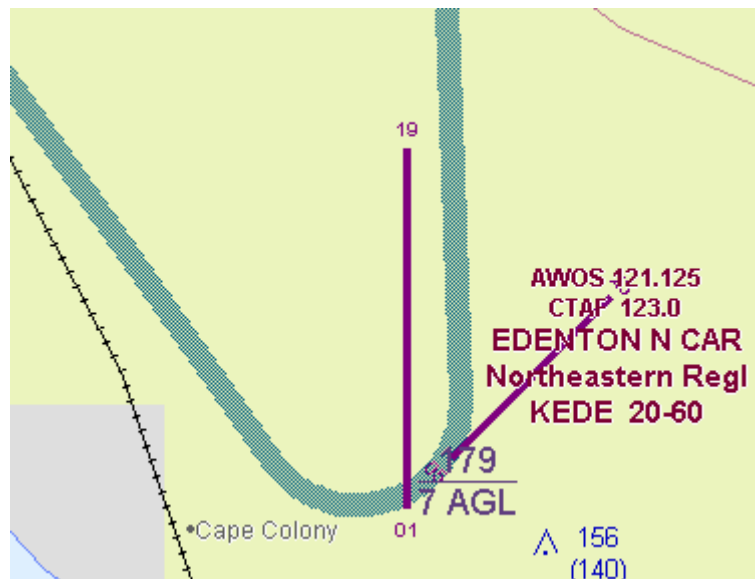
**FOR ILLUSTRATION ONLY: DO NOT USE FOR NAVIATIONAL PURPOSES**



## CHECKPOINT TURN PROCEDURES

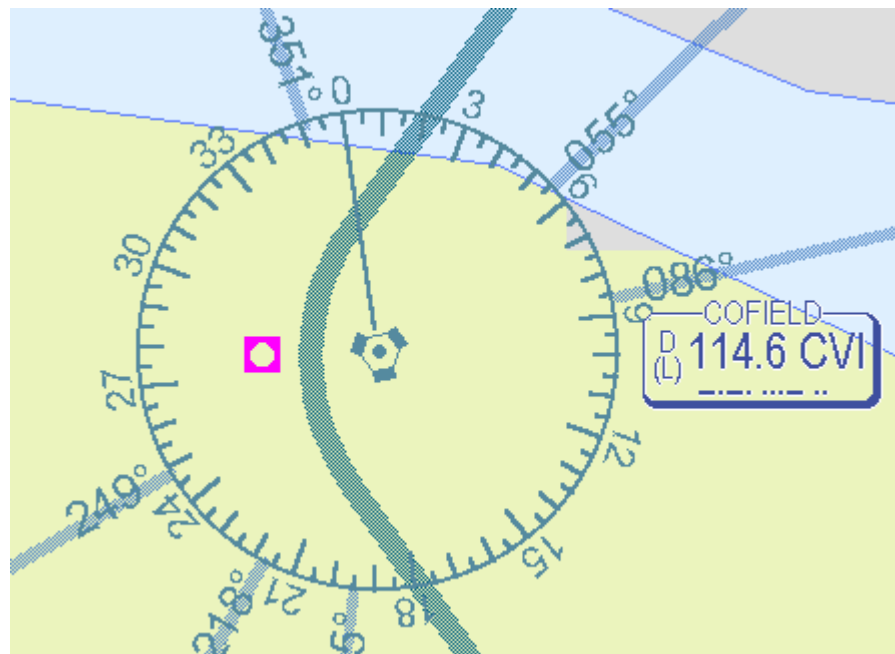
**CHECKPOINT 1:** KEDE Airport (Elevation 20ft, maintain 1,500 msl at this checkpoint).

Enter EDE parallel to runway 01-19, as soon as you cross runway 5-23, begin your turn towards the CVI VOR.



## CHECKPOINT 2: CVI VOR

The VOR tower will serve as the pylon. Racers must turn around the VOR tower.



**FINISH LINE:** Approach END of Runway 15 (closed runway) at KSFQ Airport (cross finish line at 1,600 ft MSL).

